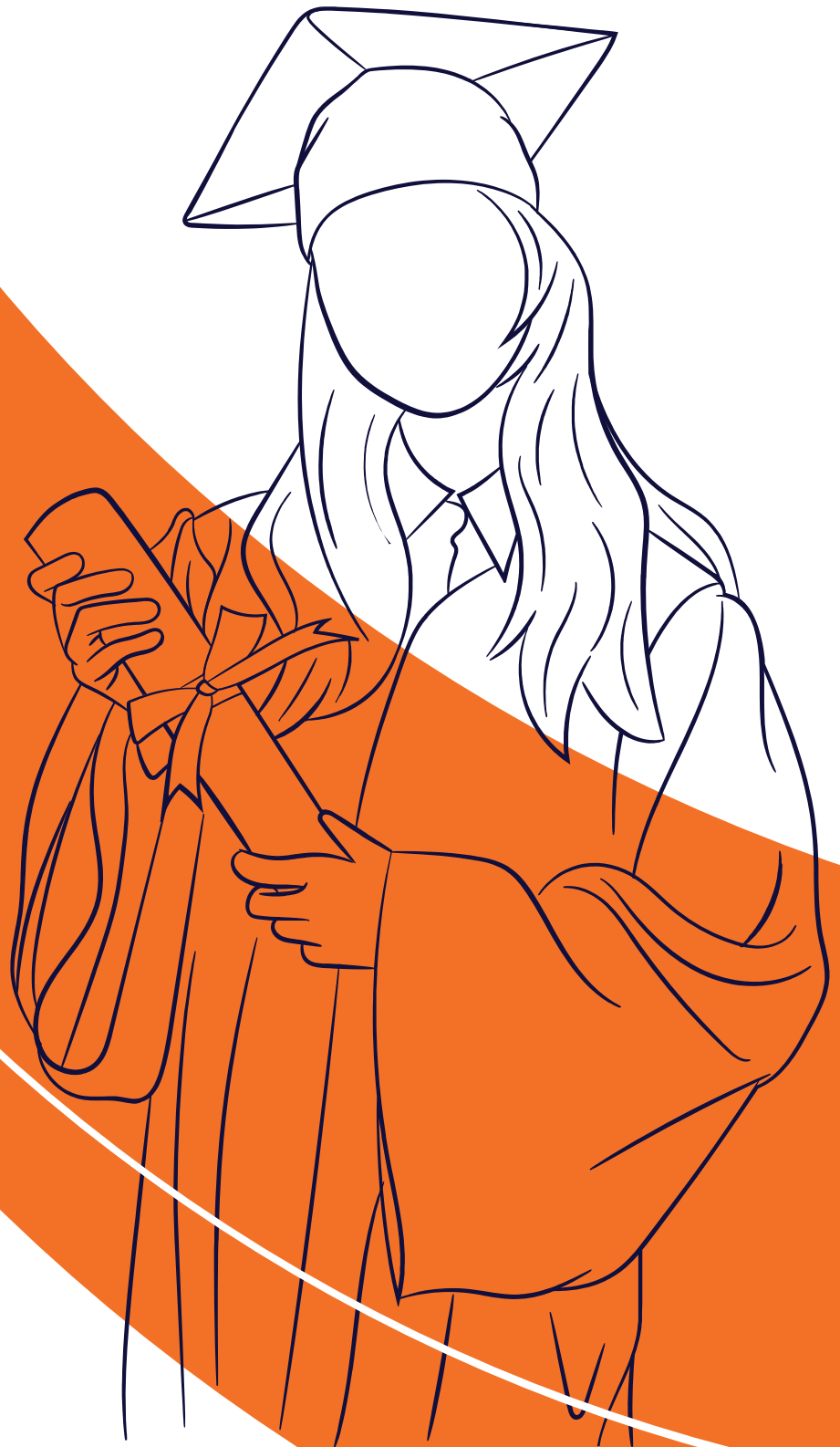


2026 SCHOLARSHIP GUIDE



Country
Universities
Centre

CLARENCE VALLEY



Table of Contents

| | |
|----|---|
| 1 | Scholarships – What are they and how do I apply? |
| 2 | UAC Scholarships |
| 9 | Scholarship Search Engines |
| 10 | Other Scholarships |
| 12 | Vision Australia Bursaries |
| 13 | Local Scholarships |
| 15 | Centrelink Scholarships and Assistance |
| 16 | Health, Nursing and Medicine Scholarships |
| 19 | Education Scholarships |
| 21 | Agriculture and Environment Scholarships |
| 23 | Building and Construction Scholarships |
| 23 | Business and Management Scholarships |
| 24 | Creative Arts Scholarships |
| 24 | Language and Humanities Scholarships |
| 25 | Law Scholarships |
| 26 | Science, Mathematics and Engineering Scholarships |
| 27 | First Nations Scholarships |
| 29 | University and TAFE Scholarship Page Listings |

This guide has been collated by CUC Clarence Valley. This is not an exhaustive listing of all scholarships available in Australia and we encourage students to look beyond this guide.

All information and links are current as of 16/06/2025

Scholarships



We know that many students aspire to go to uni to gain a degree or go to TAFE and study towards a diploma, but for many students the costs make this unattainable. Higher education isn't free, it costs \$20,000–\$45,000 to complete a Bachelor degree and, if you have to live on campus, the costs are on average \$20,000 a year. And that's before you buy any textbooks, study materials, or IT equipment!

Scholarships exist to increase opportunities for someone just like you to access higher education. Being awarded a scholarship could mean the difference between accepting or turning down a place at university.

There are scholarships specifically tailored to the needs of regional students and, even though you might not think you are eligible, no matter what your situation or background, there are many scholarships for a diverse range of people.

Examples of types of scholarships include:

- Access for regional and rural students
- Residential scholarships
- Travel and study grants
- Placement grants
- Areas of study, such as agriculture, the health professions and teaching
- Scholarships for people from diverse backgrounds.

In case you are thinking you won't have a chance, let's address some common myths about scholarship success. Many people think that to get a scholarship:

- You need to be academic.
- The odds are against you because so many apply, and you don't have a hope.
- You have to be good at writing essays.

None of these are true. It is true however that you will not get a scholarship unless you apply for one!

It is also true that your chances of success depend on finding the right scholarship to suit your circumstances and needs.

There are a number of key steps to follow to enhance your chances of success:

1. Commit: Decide that you want to apply for a scholarship
2. Assess: Find scholarships that you are eligible for
3. Research: Look far and wide
4. Knowledge: Know your audience/know what they are looking for
5. Awareness: Pay attention to your competition
6. Quality: Proofread everything!
7. Determination: Perseverance furthers! If at first you don't succeed – apply again, and again...

Timing: when do you apply?

It is important to take note of the opening and closing dates for the scholarship you are applying for – different scholarships will have different timelines to adhere to. Make sure you allow plenty of time to prepare your application and to collect any additional information or documents that may be required.

UAC Scholarship Applications: What are they?

Many NSW universities use the UAC platform to process scholarship applications, particularly for students applying to study for the first time. There are various types of scholarships you can apply for through UAC, including:

- Financial disadvantage
- Academic Achievement
- Being the first in your immediate family to attend university
- Being an Indigenous Australian
- Being a refugee or asylum seeker
- Having to relocate to attend tertiary study
- Intending to live on campus
- Having been in formal out-of-home care
- Having a disability or medical condition that affects your education
- Having experienced difficult circumstances that have affected your education
- Community service
- Leadership

How to apply via UAC:

1. Applications for 2026 open 2nd April 2025 and close 30th September 2025. You'll need to complete your application and provide all additional information and documentation by that deadline.
2. Go to the UAC website – <https://www.uac.edu.au/future-applicants/scholarships-and-schemes>
3. Create an account with UAC or log in to the one you have already created using your UAC ID & PIN.
4. Select 'Scholarship Application' in your UAC user account (all applications are submitted online)
5. Enter all your personal details & provide additional information if required

Not all institutions use the UAC platform to process scholarship applications. Below is a table showing the institutions that use UAC and the eligibility requirements. For other institutions, refer to the relevant links at the end of this guide.

| | |
|---|--|
| AIE Institute | Accepts Australian citizens and holders of an Australian permanent residency visa and will not accept New Zealand citizens and holders of an Australian temporary/student residency visa. |
| Academy of Interactive Technology | Accepts Australian citizens, New Zealand citizens and holders of an Australian permanent residency or humanitarian visa. Will not accept holders of an Australian temporary/student residency visa. |
| Asia Pacific International College | Accepts Australian citizens, New Zealand citizens and holders of an Australian permanent residency visa. Will not accept holders of an Australian temporary/student residency visa. |
| Australian Catholic University | Accepts Australian citizens, New Zealand citizens and holders of an Australian permanent residency visa. Will not accept holders of an Australian temporary/student residency visa. |
| ACAP University College | Accepts Australian citizens and holders of an Australian permanent residency visa or humanitarian visa. Will not accept New Zealand citizens and holders of an Australian temporary/student residency visa. |
| Australian College of Physical Education | Accepts Australian citizens, New Zealand citizens and holders of an Australian permanent residency visa or humanitarian visa or temporary visa. Will not accept holders of an Australian student residency visa. |

Continued...

| | |
|---------------------------------------|--|
| Australian Institute of Music | Accepts Australian citizens and holders of an Australian permanent residency visa and will not accept New Zealand citizens and holders of an Australian temporary/student residency visa. |
| Australian National University | Accepts Australian citizens, New Zealand citizens and holders of an Australian permanent residency or humanitarian visa. Will not accept holders of an Australian temporary/student residency visa. |
| Avondale University | Accepts Australian citizens, New Zealand citizens and holders of an Australian permanent residency visa. Will not accept holders of an Australian temporary/student residency visa. |
| Charles Sturt University | Accepts Australian citizens, New Zealand citizens and holders of an Australian permanent residency visa. Will not accept holders of an Australian temporary/student residency visa. |
| CQ University | Accepts Australian citizens and holders of an Australian permanent residency visa or humanitarian visa. Will not accept New Zealand citizens and holders of an Australian temporary/student residency visa. |
| Excelsia University College | Accepts Australian citizens, New Zealand citizens and holders of an Australian permanent residency visa or humanitarian visa or temporary visa. Will not accept holders of an Australian student residency visa. |

Continued...

| | |
|--|--|
| Griffith University | Accepts Australian citizens and holders of an Australian permanent residency visa and will not accept New Zealand citizens and holders of an Australian temporary/student residency visa. |
| International College of Management, Sydney | Accepts Australian citizens, New Zealand citizens and holders of an Australian permanent residency or humanitarian visa. Will not accept holders of an Australian temporary/student residency visa. |
| JMC Academy | Accepts Australian citizens, New Zealand citizens and holders of an Australian permanent residency visa. Will not accept holders of an Australian temporary/student residency visa. |
| La Trobe University | Accepts Australian citizens, New Zealand citizens and holders of an Australian permanent residency visa. Will not accept holders of an Australian temporary/student residency visa. |
| Macquarie University | Accepts Australian citizens and holders of an Australian permanent residency visa or humanitarian visa. Will not accept New Zealand citizens and holders of an Australian temporary/student residency visa. |
| MIT Sydney | Accepts Australian citizens, New Zealand citizens and holders of an Australian permanent residency visa or humanitarian visa or temporary visa. Will not accept holders of an Australian student residency visa. |

Continued...

| | |
|-------------------------------------|--|
| National Art School | Accepts Australian citizens and holders of an Australian permanent residency visa and will not accept New Zealand citizens and holders of an Australian temporary/student residency visa. |
| SAE University College | Accepts Australian citizens, New Zealand citizens and holders of an Australian permanent residency or humanitarian visa. Will not accept holders of an Australian temporary/student residency visa. |
| Southern Cross University | Accepts Australian citizens, New Zealand citizens and holders of an Australian permanent residency visa. Will not accept holders of an Australian temporary/student residency visa. |
| SP Jain Global Management | Accepts Australian citizens, New Zealand citizens and holders of an Australian permanent residency visa. Will not accept holders of an Australian temporary/student residency visa. |
| Torrens University Australia | Accepts Australian citizens and holders of an Australian permanent residency visa or humanitarian visa. Will not accept New Zealand citizens and holders of an Australian temporary/student residency visa. |
| University of Canberra | Accepts Australian citizens, New Zealand citizens and holders of an Australian permanent residency visa or humanitarian visa or temporary visa. Will not accept holders of an Australian student residency visa. |

Continued...

| | |
|---|--|
| University of New England | Accepts Australian citizens and holders of an Australian permanent residency visa and will not accept New Zealand citizens and holders of an Australian temporary/student residency visa. |
| University of Newcastle | Accepts Australian citizens, New Zealand citizens and holders of an Australian permanent residency or humanitarian visa. Will not accept holders of an Australian temporary/student residency visa. |
| The University of Notre Dame Australia | Accepts Australian citizens, New Zealand citizens and holders of an Australian permanent residency visa. Will not accept holders of an Australian temporary/student residency visa. |
| The University of Sydney | Accepts Australian citizens, New Zealand citizens and holders of an Australian permanent residency visa. Will not accept holders of an Australian temporary/student residency visa. |
| University of Technology Sydney | Accepts Australian citizens and holders of an Australian permanent residency visa or humanitarian visa. Will not accept New Zealand citizens and holders of an Australian temporary/student residency visa. |
| University of Wollongong | Accepts Australian citizens, New Zealand citizens and holders of an Australian permanent residency visa or humanitarian visa or temporary visa. Will not accept holders of an Australian student residency visa. |

Continued...

| | |
|----------------------------------|---|
| UNSW Sydney | Accepts Australian citizens and holders of an Australian permanent residency visa and will not accept New Zealand citizens and holders of an Australian temporary/student residency visa. |
| UNSW Canberra - ADFA | Accepts Australian citizens, New Zealand citizens and holders of an Australian permanent residency or humanitarian visa. Will not accept holders of an Australian temporary/student residency visa. |
| Western Sydney University | Accepts Australian citizens, New Zealand citizens and holders of an Australian permanent residency visa. Will not accept holders of an Australian temporary/student residency visa. |

Search Engines



Indigenous Pathways Portal

<https://aurorafoundation.com.au/our-work/indigenous-pathways-portal/>

This portal lists scholarship opportunities for Aboriginal and Torres Strait Islander students. Scholarships are easily filtered in the scholarship search section.

Good Universities Guide

<https://www.gooduniversitiesguide.com.au/scholarships>

This website provides a comprehensive listing of scholarships which you can browse via their search engine.

Scholarships Accessible through UAC

<https://www.uac.edu.au/search/results?q=scholarships>

This website displays various scholarships and schemes available for prospective university students. UAC collaborates with universities to widen participation in higher education by assisting in the facilitation of Equity Scholarships (ES), Educational Access Schemes (EAS), and the Schools Recommendation Scheme (SRS).

Study Australia

<https://www.studyaustralia.gov.au/>

The official Australian Government website for international students. It offers a comprehensive scholarship search tool, allowing you to filter opportunities by course, support type, and location. The platform also provides information on living in Australia, visa requirements, and student support services.

Study Assist

<https://www.studyassist.gov.au/>

A government portal providing information on financial assistance for students, including scholarships, loans, and grants. It offers guidance on eligibility and application processes for various funding options.

Other Scholarships

National Indigenous University Scholarship

<https://study.anu.edu.au/scholarships/find-scholarship/national-indigenous-university-scholarship>

The Australian National University offers the National Indigenous University Scholarship with the aim of acknowledging the academic excellence of Indigenous students in secondary school studies and provide assistance with the costs related to tertiary studies.

This scholarship is awarded every year to the value of \$12,500, with payments made each semester over 5 years.

Eligibility:

- is a domestic student
- identifies and is accepted as and Aboriginal or Torres Strait Islander
- receives an offer of admission to an undergraduate degree program at ANU
- has completed their Year 12 or equivalent qualification within the last two years and achieved an ATAR or Anu Selection rank of 95.0 or above
- has not enrolled in any undergraduate degree program previous to commencing at the University

Commonwealth Prac Payments (CPP)

<https://www.education.gov.au/higher-education/commonwealth-prac-payment>

The new Commonwealth Prac Payments has been established to help teaching, nursing, midwifery and social work students manage to cost of undertaking mandatory placements.

These payments can be applied for via your university.

Youth Off The Streets Scholarship

<https://youthoffthestreets.com.au/get-support/national-scholarship-program/>

Every year, over 25 young people from across Australia are awarded a Youth Off The Streets scholarship. These scholarships are for students who can demonstrate financial need.

Eligibility:

- Must be between aged 16 to 21
- Must be Australian citizens or permanent residents of Australia or New Zealand
- The young person must have a clear need for financial assistance and be studying in Australia for the two year period of the program.
- The young person must convey their genuine talent, ability and determination in any education or training course.

See website for application dates.

Duncan Family Scholarship in Pharmacy

<https://www.une.edu.au/scholarships/2025/duncan-family-scholarship-in-pharmacy>

The Duncan Family Scholarship in Pharmacy at the University of New England (UNE) offers financial support to full-time undergraduate students pursuing a Bachelor of Pharmacy. The scholarship provides \$625 per 6 credit points, up to a maximum of \$5,000 per academic year, paid in up to three instalments following each trimester's census date. To maintain eligibility, recipients must be enrolled full-time (48 credit points per year) and achieve a minimum GPA of 5.0 each trimester. The scholarship is open to both on-campus and online students.

Eligibility:

- Must be enrolled full-time in the Bachelor of Pharmacy program at UNE.
- Maintain and GPA of 5.0 each trimester.
- Complete a minimum of 48 credit points per academic year.
- Scholarship payments are contingent upon active enrolment and academic performance.

See website for application dates.

Support Fund for Students with a Disability

<https://www.une.edu.au/scholarships/2025/support-fund-for-students-with-disability>

The Support Fund for Students with a Disability (SFSD) at the University of New England (UNE) offers grants of up to \$8,000 per year to assist undergraduate students with disabilities. The fund aims to support students in overcoming barriers to their studies. The grants can be used for expenses such as assistive technology, travel costs for mandatory residential schools, or other disability-related study costs. To apply, students must be registered with UNE's Student Accessibility & Wellbeing Office (SAWO) and demonstrate financial need.

See website for application dates and eligibility criteria.

William McIlrath Scholarship

<https://www.une.edu.au/scholarships/2025/william-mcilrath-scholarship>

The William McIlrath Scholarship at the University of New England (UNE) supports rural and regional students pursuing full-time undergraduate degrees. The scholarship aims to assist students from rural and remote areas in their academic journey. The scholarship offers \$11,000 in the first year and \$5,000 annually in subsequent years. To maintain eligibility, recipients must be enrolled full-time and achieve a minimum GPA of 4.0.

See website for application dates and eligibility criteria.

Australia Awards

<https://www.dfat.gov.au/people-to-people/australia-awards/australia-awards-scholarships>

These awards provide opportunities for people from developing countries, particularly those countries located in the Indo-Pacific region, to undertake full time undergraduate or postgraduate study at participating Australian universities and Technical and Further Education (TAFE) institutions.

See website for application dates and eligibility criteria.

Destination Australia Scholarship

<https://www.scu.edu.au/scholarships/destination-australia-scholarship/>

The Destination Australia Scholarship at Southern Cross University (SCU) is an Australian Government initiative aimed at encouraging students to study in regional Australia. The scholarship supports both domestic and international students pursuing full-time undergraduate degrees at SCU's regional campuses in Lismore, Coffs Harbour, or the National Marine Science Centre. The scholarship offers financial assistance to help cover tuition fees and living expenses. The number of scholarships available, their value, and duration are determined at the time of offer and may vary each year.

See website for application dates and eligibility criteria.

Vision Impairment



Vision Australia Bursary

<https://www.visionaustralia.org/services/funding/other-funding/further-education-bursary#eligibility-criteria>

Each year, Vision Australia awards Further Education Bursaries to a select number of students who are blind or have low vision. The bursaries provide adaptive technology to help the students fully participate and succeed in their chosen studies. Eligibility criteria applies.

Local Scholarships

Northern Rivers Community Foundation SCU Bowen Education Fund Scholarship – University Support

<https://tinyurl.com/49ja7sb6>

Scholarships of \$2,500 for one year are available in a joint initiative between Southern Cross University and the Northern Rivers Community Foundation to provide assistance to two students pursuing higher education at SCU.

General guidelines of eligibility are as follows:

- Applicants must reside within the Northern Rivers region, including areas such as Tweed Heads, Nimbin, Kyogle, Lismore, Casino, Ballina, Byron Bay, and Grafton
- One scholarship is designated for a commencing school leaver, while the second is available for a commencing non-school-leaver or a continuing student.
- Applicants should demonstrate a commitment to the region through contributions to their school and/or broader community.

Applications open early January and Close mid February.

National Regional and Remote Tertiary Scholarship

<https://www.publiceducationfoundation.org.au/national-rural-remote-tertiary-scholarship/>

The Public Education Foundation National Regional & Remote Tertiary scholarship is open to current Year 12 students who attend public high schools in regional, rural or remote regions in all states and territories across Australia. The scholarships seek to support motivated individuals with demonstrated merit, who are facing hardship, to realise their career goals.

Eligibility:

- attends a public school in regional, rural or remote region of Australia
- currently in year 12
- Australian citizen or permanent resident
- Commitment to studying a TAFE course or University degree as a full-time student in 2026
-

The scholarship may be used for, but not limited to, the following items:

- Course fees
- Necessary equipment
- Stationary and books
- Laptop
- Face-To-Face Tutoring or Online Tutoring

Applications open June 2nd, 2025

The Gallery Foundation Emerging Artist Scholarship

<https://www.graftongallery.nsw.gov.au/Discover/Learn/The-Gallery-Foundation-Emerging-Artist-Scholarship>

The Gallery Foundation presents and emerging artist scholarship to support young creatives in the Clarence Valley. The annual scholarship aims to highlight the talents of young people, enhance connections of young emerging artists with the Grafton Regional Gallery, and advance culture in the region – a major aim of The Gallery Foundation. The scholarship aims to assist with the financial costs of future art endeavors including but not limited to travel, materials, and study support with \$5,000 awarded to the scholarship recipient.

Eligibility:

- Year 12 Students
- Living in the Clarence Valley LGA
- Studying Art or Design as part of the NSW Higher School Certificate in 2025
- Demonstrates outstanding artistic abilities and a genuine interest in furthering their knowledge, skills, or appreciation of visual arts and design

Key Dates for Emerging Artist Scholarship:

- 2026 Applications open: 16th June, 2025
- 2026 Applications close: 15th September, 2025
- 2026 Scholarship finalist notified: 10th October, 2025
- Awards Presentation: 19th November, 2025

BCU Scholarship Program

<https://www.bcu.org/about-us/giving-back/scholarship-program>

The BCU Scholarship Program is a testament to BCU's commitment to supporting education and fostering community development. Established to assist members of the Credit Union who plan to continue their education, the program offers annual awards to students pursuing full-time study at accredited institutions. The scholarships are designed to alleviate the financial burdens of higher education and encourage academic excellence.

Eligibility:

- A BCU member with your own account (not on parent's account)
- A high school senior or graduate, or current undergraduate student
- Planning to enroll in full-time undergraduate study
- Has not ever received any other Award of any type by BCU

See website for application dates.

Centrelink Scholarships & Assistance

Tertiary Access Payment (TAP)

<https://www.servicesaustralia.gov.au/tertiary-access-payment>

The Tertiary Access Payment (TAP) is a one off payment of \$5,000 to support relocation support for eligible regional/remote students. To get the payment you need to meet the eligibility criteria.

These include:

- moving from a regional or remote area for tertiary study that's at least 90 minutes away from your family home location by public transport. You can check if your family home is in a regional or remote area using the [Student Regional Area Search](#).
- an Australian resident
- studying a tertiary course at certificate IV or above
- 22 or younger on the day you start your tertiary course
- study at least 75% of a full-time study load
- study a course with a minimum duration of one academic year.
- meet the delivery method of your study program e.g. face-to-face, multi-modal and at a Regional University Study Hub (including as an online student).
- have parents or guardians whose income is under the current combined parental income limit of \$250,000.

You can claim this payment in your first year of tertiary study only.

See website for further details.

Relocation Scholarship

<https://www.servicesaustralia.gov.au/relocation-scholarship>

You might get a Relocation Scholarship if you're a student getting Youth Allowance or ABSTUDY and you meet these rules:

- are a dependent student or an independent student for a special reason
- study in a specific place
- meet the study rules
- get at least \$1 of Youth Allowance as a student or ABSTUDY Living Allowance.

Student Start-up Loan

<https://www.servicesaustralia.gov.au/what-student-start-up-loan?context=23316>

The Student Start-up Loan is a voluntary \$1,321 loan for eligible students who get Youth Allowance, Austudy or ABSTUDY Living Allowance. You can get the loan up to 2 times a year, once each loan period. Loans are tax free and you don't need to declare them to us as income for your regular student payment.

You have to pay back the loan once you start earning a certain amount of income. You should think about how this will impact you in the long term before you apply

Health, Nursing and Medicine

Betty Josephine Fyffe Rural Equity Scholarships

<https://www.newcastle.edu.au/scholarships/betty-josephine-fyffe-rural-health-scholarships>

The Betty Josephine Ryffe Rural Equity Scholarships provides a total benefit of \$10,000 each year, paid in two lump sums of \$5,000 each semester, in April and September. The scholarships are ongoing for a maximum of 5 years provided ongoing eligibility is met.

Eligibility:

- Be enrolled in any year (including honours) of a Bachelor of any of the following: Nursing, Midwifery, Physiotherapy, Nutrition and Dietetics, Occupational Therapy, Medical Radiation Science, Pharmacy, Speech Pathology, Medical Science or Doctor of Medicine Program.
- Demonstrate impact of personal circumstances, such as carer, sole parent, financial hardship, English language difficulty, Indigenous Australian, long term medical condition or effects of abuse, disability, refugee status, regional/remote disadvantage.
- Have lived in a regional or remote area of Australia for at least 12 months within the two years prior to study.
- Demonstrate activity in your local community (for example volunteering or involvement in community projects).
- Be enrolled full-time.
- Be an Australian Citizen.
- Not be the recipient of another UON Donor funded or sponsored scholarship concurrently.

Australian Rotary Scholarships

<https://australianrotaryhealth.org.au/applications-how-to-apply/program-scholarships/#toc--scholarships-for-regional-students-to-study-anywhere-in-australia->

Australian Rotary Health provides scholarships for Rural Nursing, Rural Medicine, and Indigenous Health.

- Indigenous Health Scholarship – These yearly scholarships are awarded to Indigenous tertiary students as a way to support the barriers of tertiary study and qualification in Australian Indigenous populations. Each scholarship is worth \$5,000 per year.
- Rural Medical Scholarships – ARH uses its rural medical scholarship program to create incentive for students to undertake at least one year of work placement in rural Australian communities. Each annual scholarship is worth \$5,000.
- Rural Nursing Scholarships – ARH uses its rural nursing scholarship programs to create incentive for students to undertake their final year of clinical placement in rural Australian communities. Each annual scholarship is worth \$12,500.

Australian College of Nursing

<https://www.acn.edu.au/scholarships>

<https://www.acn.edu.au/scholarships/first-nations-health-scholarships>

ACN are proud to administer a range of Australian Government Department of Health and Aged Care scholarships for undergraduate and postgraduate aged care, nursing and midwifery courses as well as the Puggy Hunter scholarship for Aboriginal and Torres Strait Islander students studying entry-level health courses.

School of Nursing, Midwifery and Indigenous Health Distance Education

[https://www.csu.edu.au/scholarships/scholarships-grants/find-](https://www.csu.edu.au/scholarships/scholarships-grants/find-scholarship/foundation/any-year/school-of-nursing-midwifery-and-indigenous-health-DE-Sch)

[scholarship/foundation/any-year/school-of-nursing-midwifery-and-indigenous-health-DE-Sch](https://www.csu.edu.au/scholarships/scholarships-grants/find-scholarship/foundation/any-year/school-of-nursing-midwifery-and-indigenous-health-DE-Sch)

The School of Nursing, Midwifery and Indigenous Health at Charles Sturt University offers a Foundation Scholarship valued at \$3,500 to support Bachelor of Nursing students committed to rural, regional, or remote nursing. This scholarship is also available to students undertaking study via Distance Education or those who are geographically isolated, providing them with an opportunity for assistance. The primary intention of this scholarship is to assist students with costs associated with accommodation and travel during clinical placements or intensive (residential) schools. The scholarship is a one-off payment, aimed at alleviating financial barriers and enabling students to focus on their studies and clinical experiences.

Available to:

- Commencing and Continuing Students
- Any undergraduate year
- Studying a Bachelor of Nursing
- Must be studying online or be geographically isolated
- Demonstrate a commitment to rural, regional or remote nursing
- Demonstrated financial hardship by providing a Centrelink Income Statement

Charles Sturt University Foundation Community Health Scholarship

[https://www.csu.edu.au/scholarships/scholarships-grants/find-](https://www.csu.edu.au/scholarships/scholarships-grants/find-scholarship/foundation/any-year/charles-sturt-university-foundation-community-health-scholarship)

[scholarship/foundation/any-year/charles-sturt-university-foundation-community-health-scholarship](https://www.csu.edu.au/scholarships/scholarships-grants/find-scholarship/foundation/any-year/charles-sturt-university-foundation-community-health-scholarship)

The Charles Sturt University Foundation Community Health Scholarship offers a one-time payment of \$3,000 to undergraduate students in any year of study. This scholarship is made possible through the generous support of individuals, service organizations, and corporations who believe in investing in the future of healthcare education.

Eligibility criteria:

- Must be enrolled in an undergraduate program related to health sciences
- Open to students in any year of study

Real Insurance – Real Futures Grant

<https://www.realinsurance.com.au/grants/real-futures-grant>

To be eligible, you must be enrolled full-time in an accredited Australian Tertiary Education Institution and be studying for a certificate, diploma, degree or traineeship in any of the following areas:

| | |
|------------------------------|--|
| Medicine | Including medical and health sciences, surgery and medical research. |
| Healthcare | Including health and fitness-related specialties, sport sciences, health services assistance and international health. |
| Specialist Healthcare | Including nursing, optometry, dentistry and pharmacy. |

Education



Department of Education & Training – Early Childhood

<https://www.scu.edu.au/scholarships/aeu-nsw-teachers-federation-branch-scholarship/>

The AEU NSW Teachers Federation Branch Scholarship supports a full-time student in their final year of their education degree who has completed Year 12 (or equivalent) at a public school or TAFE (preferably within NSW). The recipient will be a Student Member of the NSW Teachers Federation. A student's experience of disadvantage may be considered.

Eligibility criteria:

- Be in the final year of a Bachelor of Education in any specialisation, or the Bachelor of Arts, Bachelor of Education, or Master of Teaching
- Be studying full-time (minimum of 72 credit points for the academic year)
- Have completed Year 12 (or equivalent) at a public school or TAFE, preferably within NSW
- Be a Student Member of the NSW Teachers Federation (membership is free)

See website for application dates.

Teacher Education Scholarship – NSW Department of Education

<https://education.nsw.gov.au/teach-nsw/get-paid-to-study/teacher-education-scholarship>

The Teacher Education Scholarship provides financial support of up to \$7,500 per year whilst studying full-time, a \$6,000 appointment allowance and a permanent teaching position with the NSW Department of Education following successful completion of studies.

Applications are open to:

- HSC students
- University students
- Career changes

See website for application dates.

Commonwealth Teaching Scholarships

<https://www.education.gov.au/teaching-scholarships>

Commonwealth Teaching Scholarships support new undergraduate and postgraduate teaching students to meet the costs of their study in exchange for teaching in government schools or government-run early learning settings for a period of time after graduating from their degree.

Scholarships of up to \$40,000 per student are available for full-time undergraduate initial teacher education (ITE) students (\$10,000 per year for a four-year qualification) and up to \$20,000 for full-time postgraduate ITE students (\$10,000 per year for a two-year- qualification).

Applications are strongly encouraged from school leavers and career changers who meet the eligibility criteria and who are high-achieving students (with an ATAR of 80 or above or equivalent academic result), First Nations peoples, people for whom English is an additional language or dialect, people with disability, people from regional, rural or remote locations, mid-career professionals or people from low socio-economic backgrounds, who aspire to a rewarding career in teaching.

Eligibility:

- and individual located in Australia
- an Australian Citizen
- a permanent resident
- a holder of a humanitarian visa
- a New Zealand citizen living in Australia
- intend to enrol, or be enrolled, for full-time study in an accredited ITE program commencing in the first study period or semester of 2024
- not have commenced an accredited ITE program prior to the year the scholarship will be offered.
- be willing to commit to teaching for four years (undergraduate) or two years (postgraduate) in government schools or government-run early learning settings.

Scholarships will be available over five rounds from 2024 to 2028 with up to 1,000 scholarships per year to be offered. Please note, applications for round 2 have closed. To receive key dates and information about the program you can register for updates.

See website for application dates.

Agriculture and Environment



NSW Farmers tertiary Scholarships

<https://www.nswfarmers.org.au/NSWFA/Content/Partners/Scholarships.aspx>

NSW Farmers offers annual scholarships to support the education of members or their children pursuing university or vocational qualifications in fields relevant to regional and rural Australia. These scholarships aim to promote and encourage excellence in tertiary studies from member families.

Eligibility:

- Applicants must be in their second year of study
- Fields of study should be related to agriculture or rural industries
- Applicants must be members of NSW Farmers or have parents/legal guardians who are full members of the Association for at least two consecutive years before the date of application.

See website for application dates.

Hicks Family Agricultural Scholarship

<https://www.csu.edu.au/scholarships/scholarships-grants/find-scholarship/foundation/continuing/hicks-family-agricultural-scholarship>

The Hicks Family Agricultural Scholarship, administered by Charles Sturt University (CSU), is designed to support continuing students pursuing agricultural studies. This scholarship aims to alleviate financial barriers, enabling recipients to focus on their academic and professional development in the field of agriculture.

Eligibility criteria:

- Be a continuing student at CSU
- Be enrolled in an eligible agriculture-related course
- Have a minimum GPA of 5.0
- Demonstrate financial need

See website for application dates.

Mountain Blue Agricultural Innovation Scholarship

<https://www.scu.edu.au/scholarships/mountain-blue-agricultural-innovation-scholarship/>

The Mountain Blue Agricultural Innovation Scholarship is an annual award offered by Southern Cross University (SCU) to support students pursuing a Bachelor of Science majoring in Regenerative Agriculture. This scholarship aims to foster the next generation of agricultural leaders by providing financial assistance to passionate and innovative individuals committed to shaping the future of agriculture.

Eligibility criteria:

- Be Australian citizens or permanent residents of Australia
- Be enrolled full-time in or commencing a Bachelor of Science majoring in Regenerative Agriculture at Southern Cross University.
- Reside within the north Coast
- Show strong academic performance with excellent achievements as evidenced by recent ATAR results or a current University GPA.

As part of their application, students may be required to provide a Statement of Commitment to their studies. This statement will reflect their passion and dedication to regenerative agriculture. Additionally, students would explain how receiving this scholarship will help them achieve their career goals in this field.

See website for application dates.

Building and Construction

Building and Construction Foundation Scholarships

<https://www.mbav.com.au/Building-and-Construction-Foundation>

The Foundation provides financial assistance to individuals through three scholarships. Applications are received on a rolling basis (no deadlines) for the (1) Early Career; (2) Career Advancement; and (3) Leadership scholarships.

Early Career Scholarship – \$2,500

Offering \$2,500 to individuals embarking on apprenticeships or pre-apprenticeships in skilled trades, helping them gain the foundational skills needed for a successful career in construction.

Leadership Scholarship – \$5,000

Providing up to \$5,000 for those pursuing construction-related diplomas or degrees, fostering the next generation of leaders in the industry.

See website for application dates.

Business and Management

Eric Campbell Scott (Rural/Regional) Scholarship

<https://www.sydney.edu.au/scholarships/a/eric-campbell-scott--rural---regional--scholarship.html>

An undergraduate scholarship awarding \$10,000 p.a. for rural/regional students enrolling in the Bachelor of Commerce or Bachelor of Commerce and Bachelor of Advanced Studies at the University of Sydney.

Eligibility criteria:

- Must be enrolled in the Bachelor of Commerce and Bachelor of Advanced Studies course administered by the University of Sydney Business School
- Have completed the NSW High School Certificate or equivalent in the year prior to commencement of the undergraduate degree.

See website for application dates.

Management Cadetship

<https://www.gooduniversitiesguide.com.au/course-provider/university-of-wollongong/scholarship/management-cadetship/40ae18cc63609d32140da6a3b58e1db4>

The University of Wollongong offers a management cadetship aimed at high-achieving Year 12 students, to allow students to combine studies in a relevant undergraduate degree with employment in a number of different UOW departments.

Eligibility criteria:

- Must have graduated Year 12 in either 2024 or 2025
- Applicants must be enrolled in a relevant undergraduate degree in management, marketing, finance, accounting or business information systems at UOW.

See website for application dates.

Creative Arts

Rebecca Coyle Memorial Scholarship in the Creative Arts

<https://www.gooduniversitiesguide.com.au/course-provider/southern-cross-university/scholarship/rebecca-coyle-memorial-scholarship-in-the-creative-arts/8f6e767dda09679ce9c07fcb2e42fd25>

The \$5000 scholarship is open to students undertaking a Bachelor of Visual Arts with Honours, Bachelor of Media with Honours or the Bachelor of Contemporary Music with Honours. Applicants will be evaluated on strong academic record, and an honours research proposal topic, accompanied by a CV.

See website for further details.

Languages and Humanities

Melbourne Global Scholarship in Language Study

<https://scholarships.unimelb.edu.au/awards/arts-global-languages-scholarships>

The Arts Global Languages Scholarship at the University of Melbourne offers a one-off payment of \$1,500 to \$8,000 to support undergraduate and graduate students undertaking credit-bearing overseas language programs. Eligible applicants must be enrolled at the university, have completed required credit points and language subjects, maintain a 70+ WAM, and participate in a program of at least 2–3 weeks conducted in the target language. Students who've previously received certain mobility scholarships are not eligible.

Applications open June 30th and close September 8th 2025.

Law

Law Equity Scholarship

<https://www.uts.edu.au/for-students/admissions-entry/scholarships/law-equity-scholarship>

The Law Equity Scholarship at the University of Technology Sydney (UTS) supports incoming undergraduate law students who face financial hardship or other disadvantages. Valued at \$5,000 per year for up to four years (totaling up to \$20,000), this scholarship aims to ease financial pressure and help students focus on their legal studies. It is awarded based on academic merit, demonstrated financial need, and personal motivation. Applicants must apply through the UAC Equity Scholarship portal and have received an offer to study a Bachelor of Laws (single or combined) at UTS.

See website for application dates

Eric Cunstance Shaw Scholarship

<https://www.sydney.edu.au/scholarships/b/eric-cunstance-shaw-scholarship.html>

The Eric Cunstance Shaw Scholarship is a merit-based award established in memory of Mr. Eric Cunstance Shaw (BA, LLB) through the estate of Mr. Constantine Bloukos. It aims to support students from rural or remote areas of Australia who are commencing a Bachelor of Laws (LLB) or Juris Doctor (JD) at the University of Sydney Law School with a one off payment of up to \$7,000.

Eligibility criteria:

- Reside in an inner regional, outer regional, remote or very remote area of Australia.
- Commencing an LLB or JD at the University of Sydney.
- Demonstrate leadership experience, communication skills, personal interest, and community engagement.

See website for application dates.

RSPCA Sybil Emslie Animal Law Scholarship

<https://www.rspca.org.au/what-we-do/our-role-in-animal-welfare-science/scholarships>

The RSPCA Sybil Emslie Animal Law Scholarship is intended to celebrate Sybil Emslie's life-long commitment to the care and protection of animals by encouraging legal scholarship and practice dedicated to advancing animal welfare. The \$1,000 annual scholarship will be awarded to a law student or lawyer who has a strong academic record and a commitment to the practice of animal law through active and substantial engagement with animal law and animal protection organisations and initiatives.

Science, Mathematics and Engineering

CAE Aboriginal and Torres Strait Islander Engineering Scholarship

<https://www.sydney.edu.au/scholarships/b/cae-aboriginal-and-torres-strait-islander-engineering-scholarshi.html>

The CAE Aboriginal and Torres Strait Islander Engineering Scholarship at the University of Sydney offers \$10,000 per year for up to four years to support Indigenous students pursuing undergraduate degrees in engineering. The scholarship aims to encourage and assist Aboriginal and/or Torres Strait Islander students in studying engineering or related disciplines at the Faculty of Engineering.

Eligibility criteria:

- Must be Australian citizen, permanent resident, or New Zealand citizen.
- Must identify as Aboriginal and/or Torres Strait Islander
- Must have an unconditional offer for an undergraduate program in the Faculty of Engineering.
- Applicants should be current school leavers who qualify for entry into the program

See website for application dates.

Women in STEM

<https://www.womenofstem.com.au/about>

This scholarship will be offered to young women aged 17–20 who are studying a degree in a STEM related field. The purpose of this scholarship is to provide the chosen applicants with financial aid to be used for general living expenses, course expenses, textbooks, extracurricular or any additional education. The recipient must be actively enrolled and studying during the duration of the scholarship.

Defence Women in STEM

<https://www.dst.defence.gov.au/partner-with-us/university/scholarships/women-in-stem>

The Defence Women in STEM Undergraduate Scholarships are aimed at encouraging high-performing women to continue their university study in Science, Technology, Engineering, and Mathematics (STEM) fields and improve the representation of women in the STEM workforce. These scholarships are sponsored by the Defence Science and Technology Group (DSTG).

First Nations Scholarships



The CUC Clarence Valley Artwork was designed and created by Yaegl/ Yaegl/Githabul artist, Fiona Vesper. It tells the story of our three local Nations: Bundjalung, Gumbaynggirr and Yaegl and how they are distinctively unique but connected through, what we now refer to as, the Clarence River.

We respectfully acknowledge the Bundjalung, Gumbaynggirr and Yaegl Peoples as the traditional custodians of the Clarence Valley upon which we learn, work, live and play. We pay our respect to the broader First Nations community, acknowledging their deep, enduring and ongoing connection to Country and the cultural learning that has and continues to take place upon these lands and waters.

First Nations Scholarships

Aurora Education Foundation – Indigenous Pathways Portal

<https://aurorafoundation.com.au/our-work/indigenous-pathways-portal/>

The Indigenous Pathways Portal by the Aurora Education Foundation is an online platform designed to support Aboriginal and Torres Strait Islander students in accessing educational opportunities. It offers a centralized hub for scholarships, programs, and resources tailored to Indigenous learners at various stages—from high school through to postgraduate study and professional development. Additionally, the portal offers guidance and resources for students at different educational levels, including primary, high school, and prospective university students

University of New England – Oorala Kick Start Scholarship

<https://www.une.edu.au/scholarships/2025/oorala-kick-start-scholarship>

The Oorala Kick Start Scholarship at the University of New England is a one year \$5000 scholarship aimed at supporting Aboriginal and Torres Strait Islander students who have recently completed Year 12 or taken a gap year. This scholarship is designed for first time university students, acknowledging the financial challenges of transitioning to higher education

Charles Sturt University – First Nations Scholarships

<https://www.csu.edu.au/scholarships/scholarships-grants/find-scholarship/atsi>

Charles Sturt University offers a broad range of Scholarships to support First Nations students in managing the costs associated with tertiary education.

Such as the following:

- First Nations Education Cost Scholarship
- CSIRO Indigenous STEM Scholarship
- CSU Foundation Aboriginal & Torres Strait Islander Achievement Scholarship

Southern Cross University – Commonwealth Indigenous Scholarships

<https://www.scu.edu.au/scholarships/commonwealth-indigenous-scholarships/>

Southern Cross University provide two types of Commonwealth Indigenous Scholarships to support Indigenous Australian students with Accommodation and Education Costs. These Scholarships are available to Indigenous students enrolled in any course or degree at SCU.

University of Newcastle Academic High Performers Scholarship – Indigenous Year 12 School Leavers

<https://tinyurl.com/mvae3uns>

This scholarship program is available to high performing applicants undertaking an undergraduate degree full-time in any area of study. Aiming to provide financial support of \$10,000 each year for standard duration of degree (3-5 years) as well as opportunities for formal recognition by the Vice-Chancellor and access to leadership training and academic mentoring programs within your College.



University Scholarship Listings

These pages will give you scholarship information specific to each institution.

| | |
|---|---|
| Australian Catholic University | https://www.acu.edu.au/study-at-acu/fees-and-scholarships/find-a-scholarship |
| Charles Sturt University | https://study.csu.edu.au/apply/scholarships-grants |
| Deakin University | https://www.deakin.edu.au/study/fees-and-scholarships/scholarships/find-a-scholarship |
| Federation University | https://federation.edu.au/current-students/starting-at-federation/scholarships |
| LaTrobe University | https://www.latrobe.edu.au/study/scholarships |
| Monash University | https://www.monash.edu/study/fees-scholarships/scholarships |
| RMIT | https://www.rmit.edu.au/students/careers-opportunities/scholarships |
| Swinburne University of Technology | https://www.swinburne.edu.au/study/options/scholarships/list/ |
| University of New England | https://www.une.edu.au/scholarships |

| | |
|--|---|
| Southern Cross University | https://www.scu.edu.au/scholarships/find-a-scholarship/ |
| Bond University | https://bond.edu.au/entry-to-bond/scholarships |
| QUT | https://www.qut.edu.au/study/fees-and-scholarships/scholarships |
| The University of Queensland | https://scholarships.uq.edu.au/ |
| UNSW Sydney | https://www.scholarships.unsw.edu.au/ |
| University of Adelaide | https://www.adelaide.edu.au/scholarships/ |
| Macquarie University | https://www.mq.edu.au/study/admissions-and-entry/scholarships |
| University of Newcastle | https://applications.newcastle.edu.au/scholarships/ |
| University of Sydney | https://www.sydney.edu.au/scholarships/domestic.html |
| University of Southern Queensland | https://www.unisq.edu.au/scholarships |
| Curtin University | https://www.curtin.edu.au/study/scholarships/ |
| Griffith University | https://www.griffith.edu.au/scholarships |

| | |
|----------------------------------|---|
| James Cook University | https://www.jcu.edu.au/scholarships |
| CQUniversity | https://www.cqu.edu.au/study/prepare/scholarships |
| University of Canberra | https://www.canberra.edu.au/scholarships/ |
| Charles Darwin University | https://www.cdu.edu.au/search?search=scholarships |
| University of Wollongong | https://www.uow.edu.au/study/scholarships/ |



Country
Universities
Centre

CLARENCE VALLEY